

## Engineering

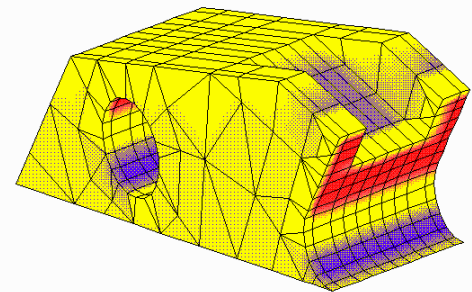
### CORPORATE CAPABILITY

The M&T Company has a comprehensive engineering & design capability to develop prototypes and production equipment. We provide complete project life cycle support



ranging from identifying operational needs and evaluating feasibility concepts through selecting alternatives, generating conceptual designs, designing and testing systems and supporting

production, deployment and operations.



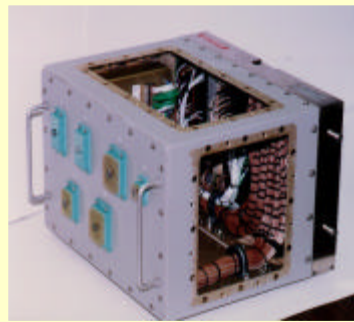
**C-13 MOD 2 Catapult  
Shuttle Blade Isometric**

**"You Benefit from Our High Quality, Cost-Effective  
Engineering Solutions"**

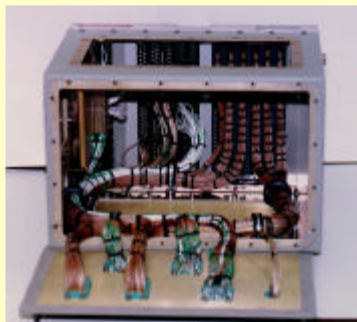
#### **Electrical / Mechanical Engineering Competencies**

- ◆ Operational Requirements & Specification Development
- ◆ Concept Design & Layout
- ◆ Design Trade Studies
- ◆ Cost of Ownership Studies
- ◆ Risk Identification & Reduction
- ◆ Modeling & Simulation
- ◆ Proof of Principle Mock-Ups
- ◆ Embedded Software Design
- ◆ Prototype Development
- ◆ Circuit Card Assembly Engineering & Design
- ◆ Equipment Test Requirements, Specifications & Procedures
- ◆ Software / Hardware Integration
- ◆ Functional & System Testing
- ◆ Technical Data Package Preparation
- ◆ Reverse Engineering
- ◆ Parts Obsolescence Redesign
- ◆ In-service Engineering

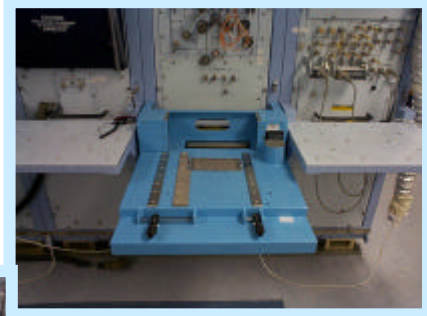
## Engineering Products



**TPS Prototype AN / APS 137 ID OTPS 1**



The M&T Company has been engineering and prototyping avionics support equipment for the last ten years. A sampling of our products includes: Test



**Holding Fixture**

Program Sets for Weapons Replaceable Assemblies (WRAs) and Shop Replaceable Assemblies (SRAs) comprising Interface Devices, WRA Holding fixtures that simulate the CASS work surface, cable sets, TPS documentation and ATLAS software programs for the AN/APS-137 Radar; jointly with the US Navy, engineered and built the Support Arm Assembly for the



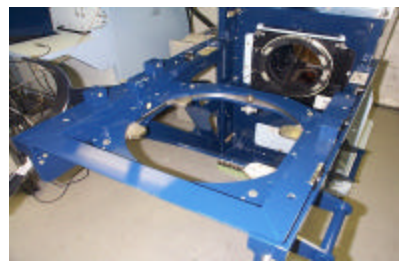
**WRA Interface Device**



**SRA Interface Device**



**Support Arm Assembly**



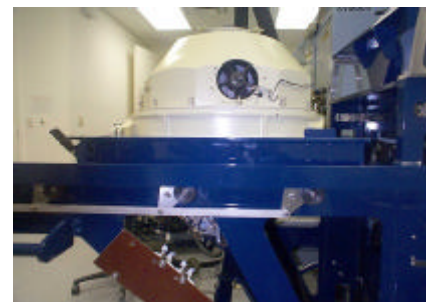
**Receiver SRA/WRA Fixture**

CASS EOS+, a Receiver SRA / WRA Fixture supporting the OR-263 WRA and a fixture supporting the IR Viewer WRA on the CASS; engineered and prototyped an

Operational Level transportable Power Distribution Unit for providing AC and DC power for testing the F-18 FLIR POD; and numerous other projects.



**F-18 FLIR Power Distribution Unit**



**IR Viewer & Fixture**

Please visit our web site at <http://www.cdi-gs.com/mt>

Contact: Tony DiDomenico, Director of Business Development at (631) 234-4001; TonyD@cdicorp.com.