

Test Program Set Development

The M&T Company has over fifteen years experience in developing and producing high quality Test Program Set (TPS) solutions to a wide range of avionic and support equipment assemblies. Our engineers can quickly assess the proposed unit to test and determine its suitability and cost effectiveness for automatic testing on your Automatic Test Equipment (ATE). We also offer test programming services to offload existing test programs to your new target ATE.



“TPS Design or Offload at an Affordable Price”

A sampling of our TPS Development and offload experience over the past 10 years for Weapons Replaceable Assemblies (WRAs) and Shop Replaceable Assemblies (SRAs) is shown below.

TPS Development Experience

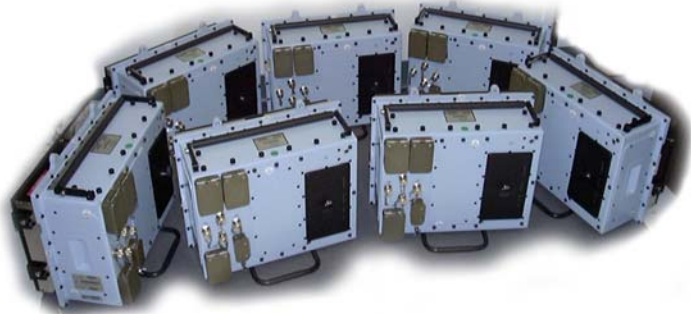
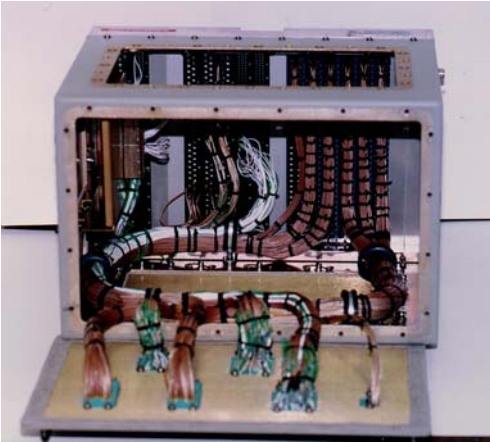
- ◆ S-3 AN/APS-137 Radar - Qty 1 WRA, 19 SRAs
- ◆ CAINS II Inertial Navigation Set - Qty 1 WRA
- ◆ F-18 E/F Radar Receiver, Radar Synthesizer, Servo, and Generator Control Unit - Qty 1 WRA, 4 SRAs
- ◆ VAST to CASS Offload Lots 3 & 5 - Qty 4 WRAs, 31 SRAs
- ◆ ESTS AN/ASM-614 Offload to CASS - Qty 11 WRAs
- ◆ EMTC AN/ASM-175 Offload to AN/USM 484 HTS - Qty 34 SRAs
- ◆ AN/USM-449 Offload to CASS - Qty 4 SRAs
- ◆ AN/AWG-9 Receiver - Qty 1 SRA
- ◆ Watkins Johnson Depot ATE to CASS Offload - Qty 6 SRAs

ATE Experience

- ◆ AN/USM-636CASS
- ◆ AN/USM-484 HTS
- ◆ AN/USM-449 Test System
- ◆ AN/USM-247 VAST
- ◆ AN/USM-410 ATS
- ◆ HATS
- ◆ CAT IIID
- ◆ RTCASS
- ◆ AN/USM-465A Digital Card Tester Test Set
- ◆ GR 2225
- ◆ EQUATE
- ◆ HP3070

INTERFACE DEVICE EXPERIENCE

Working with our TPS Engineers, our electrical and mechanical engineers can design a specific Interface Device (ID) to bridge the electro mechanical gap between your Unit Under Test (UUT) and your ATE.



Our program managers and engineers can provide a tailored TPS data package to fit your project needs. The following is a list of the Technical Data we can develop for a TPS.

- ❑ UUT Test Program Source Listing
- ❑ ID Test Program Source Listing
- ❑ System Interconnect Diagram
- ❑ Test Program Instructions
- ❑ Master Test Program Set Index
- ❑ Interface Device Technical Data Package

Please visit our web site at <http://www.cdi-gs.com/mt>

Contact: Tony DiDomenico, Director of Business Development at (631) 234-4001; TonyD@cdicorp.com